

Because the following craft session was lengthy, the usual coffee break didn't take place, and drinks and refreshments were served at the tables so work was able to continue. The craft session was led by Josie Chisholm: felt was made and then made into a flower brooch. The technique was quite lengthy, involving 5 stages including dry, wet, cutting and sewing. Whispy strands of merino wool in the colours chosen went through the various stages, to eventually make a square of felt from which petal shapes were cut and then sewn together. The resulting flower brooches were very pretty.

Marjorie Mitchell

Finishing with a Smile ...

... A surgeon, an architect and a politician were arguing as to whose profession was the oldest. Said the surgeon: "Eve was made from Adam's rib, and that surely was a surgical operation."

"Maybe," said the architect, "but prior to that, order was created out of chaos, and that was an architectural job."

"But you forget," interrupted the politician, "somebody had created the chaos first!"



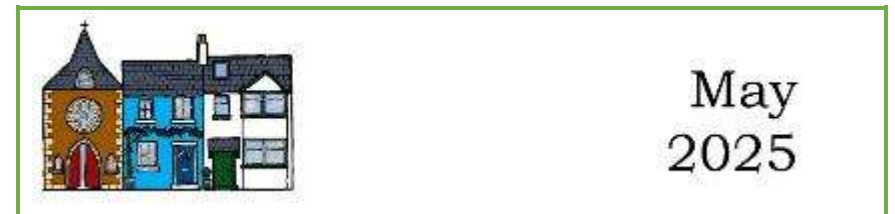
STOP PRESS! Thank you to all who donated to Paul for his London Marathon run in aid of Pilgrims Hospices. He completed in 6hrs 14mins.



50p (or £5 per annum)

SALTWOOD PARISH MAGAZINE

Saltwood and Lympe benefice



Useful Contacts:

Rector - Rev Barry Knott: Telephone: 01303 883243

email: rector@saltwoodchurch.org

Church website: www.saltwoodchurch.org

Community Support Hub: 01303 269602

Parish Pastoral Support: 0300 030 1330

**Children & Families Ministry (including weddings and baptisms) –
Christine Clover:**

Telephone: 0300 030 1662

email: christineclover@lympneandsaltwoodchurches.uk

Lads' Club Bookings: Jan Heard 01303 266945

email: jan.entendu@gmail.com

Parish magazine: Beth Lewsey 01303 264577

email: bethlewsey@hotmail.com

ITEMS FOR THE JUNE MAGAZINE

If you have any items for the June edition of the magazine, please forward to Beth Lewsey, by the **24th May** by email if possible, to: parishmagazine@saltwoodchurch.org or deliver to 20 Castle Avenue. (Tel 01303 264577).

*N.B. Copies of the parish magazine can be found under the tab 'Newsletters' on our website: lympneandsaltwoodchurches.org.uk
The 'e' version may contain extra material, so it's always worth a look!*

Castle Green WI

<https://castlegreenwi.org.uk/>

Castle Green WI met on a sunny morning in the Lads' Club where 31 members and 2 guests were welcomed by the President Christine Farquhar.

She thanked everyone who volunteered to do the various tasks which help the WI to run smoothly at the monthly meetings. There are now 55 members, and new members are always welcome.

The Federation has introduced a Learning Hub where various activities and information can be found. An item about On-line Financial Security was recommended. Christine also reminded members to clear chairs away at the end of the meeting. WI raffle tickets were sold.

There is now a defibrillator installed in the Lads' Club with instructions on how to use it.

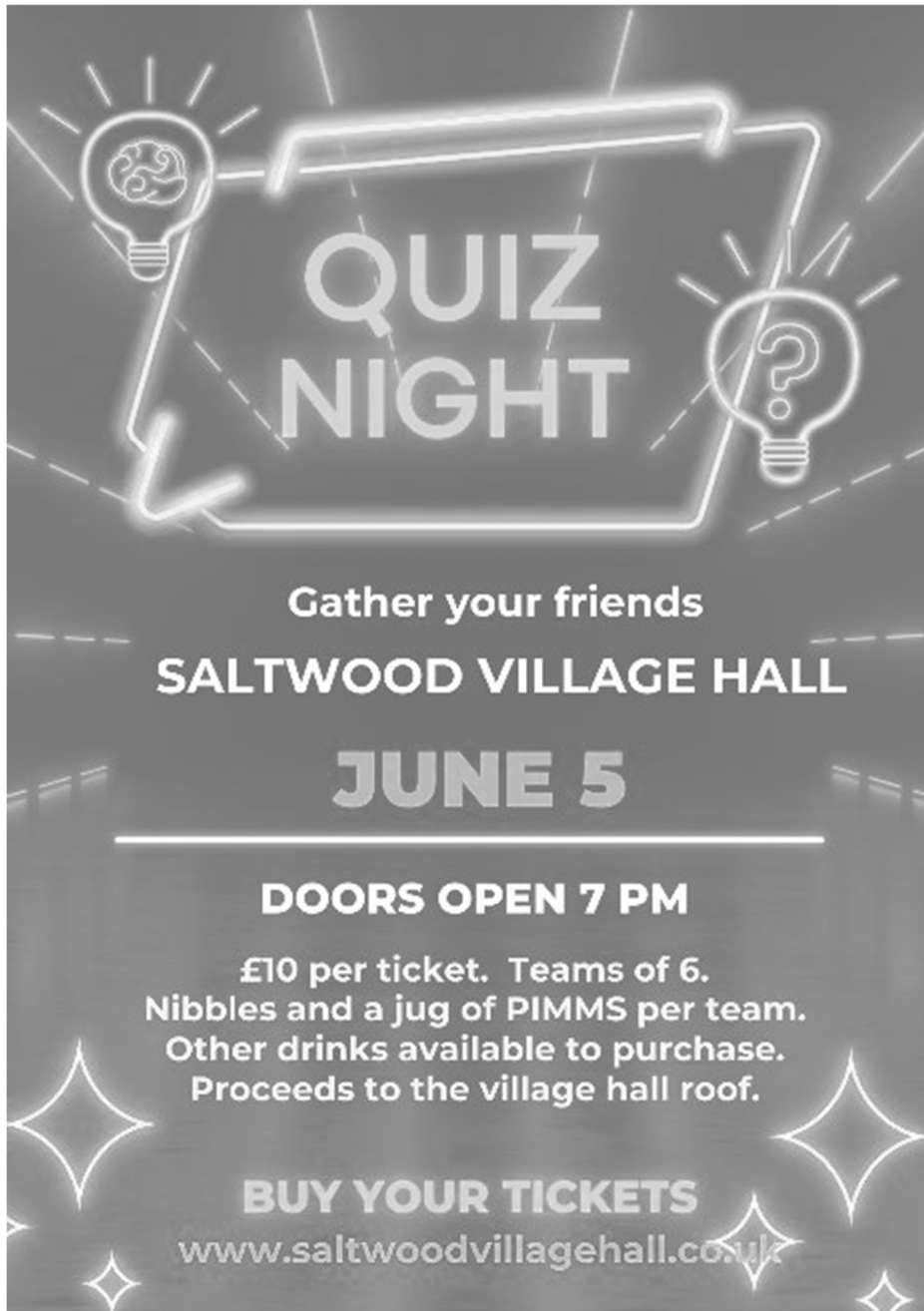
WI diaries can now be ordered on- line.

The NFWI AGM, on 4th June, will be held on- line, and Hythe WI have invited our members to meet in the Tin Tabernacle. Tickets £5 including refreshments.

Sub-groups all reported good progress. The new Gardening group is successful with many new members.

The annual summer outing was discussed and there will be a visit to Bilsington Priory; a cream tea and tour are included. Cost £25

The May meeting will be the Breakfast meeting, when croissants will be served.



QUIZ NIGHT

Gather your friends
SALTWOOD VILLAGE HALL
JUNE 5

DOORS OPEN 7 PM

£10 per ticket. Teams of 6.
Nibbles and a jug of PIMMS per team.
Other drinks available to purchase.
Proceeds to the village hall roof.

BUY YOUR TICKETS
www.saltwoodvillagehall.co.uk

A Letter from the Rector

Dear All,

I hope this message finds you filled with joy and hope after our recent celebration of Easter! What a special and varied time it was, filled with worship, fellowship, and the joyous proclamation of Jesus' resurrection. Thank you to everyone who participated in the services, decorations, flowers, scene building, costumes, and any other special activity. Your contributions made Holy Week truly memorable.

As we reflect on the message of Easter, we are reminded of the hope and new life that comes through the resurrection. Just as the flowers bloom and the earth comes alive in spring, we are called to embrace the renewal that Jesus offers us. Let us carry the spirit of Easter in our hearts as we move forward into this season of growth and rejuvenation.

As we step into spring, we have an exciting event starting with opportunity for fellowship and growth in our community:

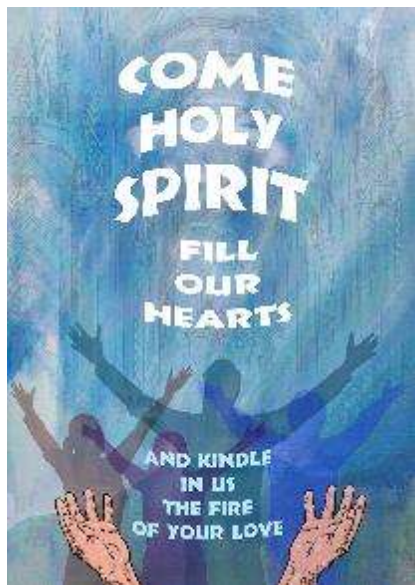
Beginning on Thursday June 5th, at 7pm, join us for a time of Bible reflection in the County Members. We are calling this Hope. This is the start of a monthly event that has come out of our Lymgne Lent Course. Why not come early and enjoy the fine food served there. If this is not your thing then please consider visiting one of our Home Groups.

As we move into this vibrant season, let's continue to support one another through prayer. If you have any specific prayer requests or know someone in need of support, please reach out to our prayer team. We are here to walk alongside you in faith.

Remember to stay connected through our church website, newsletters, and social media platforms for updates on events, resources, and messages. We encourage you to invite friends and family to join us in worship and all community activities!

As we embrace the beauty of spring, let us carry the joy of the resurrection into every aspect of our lives. May God bless you abundantly as we journey together in faith.

Rev Barry



Saltwood Church Pastoral Group

*'And let us look out for one another to provoke love and good works'
(Hebrews 10:24)*

Our Pastoral Group meets monthly to seek ways of offering support to those who are going through difficult or challenging times. If you know someone you are concerned about, or if you have concerns yourself, please contact us. You will always find a friendly voice and a listening ear at the end of the line.

Caring for others is at the heart of Christian life and you can help us by being our eyes and ears, letting us know of anyone who is in need.

Contacts: 01303 266454 01303 883243

SALTWOOD VILLAGE SOCIETY

THURSDAY 15TH MAY

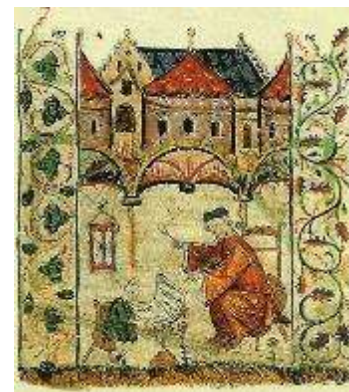
7.15 for 7.30PM

THE LADS' CLUB, RECTORY LANE

'A CHILD'S LIFE IN THE MIDDLE AGES'

This talk on medieval children goes from before the cradle with superstitions surrounding pregnancy and childbirth, to the trials and tribulations of teenage years and all too often to an early grave.

BY IMOGEN CORRIGAN



BRIEF AGM/VILLAGE NEWS/RAFFLE

FREE TEA/COFFEE

MEMBERS £3, NON-MEMBERS £8.

ALL WELCOME

FREE PARKING AT THE CHURCH

SHAL: Studying History and Archaeology in Lympne

At our April meeting we were treated to a fascinating talk by Nathalie Cohen, Regional (Kent, Sussex and Greater London) Archaeologist for the National Trust.

Her focus was on the Trust's property, Smallhythe near Tenterden, best known as a bohemian rural retreat once owned by the famous actress Ellen Terry and her daughter, Edy Craig. The surrounding fields preserved evidence of a much earlier activity, both a medieval royal shipyard and a previously unknown Roman settlement. The excavations covered five years, commencing in 2020 when earthworks were revealed, together with land reclamation between the Marsh and the Weald which was abandoned in the 1630s.

In the early 1600s it was a royal shipbuilding site building for each of the four monarchs, one for each king. A Time Team TV excavation over 20 years ago revealed the shipping slipways and large nails for the construction for the boats under the Clerk of the Kings' ships from 1495 to 1523. The next eight weeks of fieldwork revealed, to their surprise, a Roman-dug pit and bits of Roman pottery. Despite a great fire in 1514 Smallhythe survived. In this excavation 21 trenches were dug revealing some Roman pottery, some medieval evidence and imported Roman Samian-ware, as well as a brick kiln in the shipyard, whilst metal detecting revealed a trench, a midden dump and an orchard. Despite a very dry summer in 2022 metal detecting revealed evidence for the building and breaking up of ships as well as over 10,000 ferrous nails. Documents in Canterbury Cathedral relate to a Robert and William owning small holding land at Smallhythe to the north of the landing place; French wine drinking glasses; and evidence of the Henry V111 boat 'the Grand Mistress'. Two other trenches were of Roman origin and from their base a clay pipe with a figurine head was found in good condition. We are indebted to Nathalie for her impressive presentation.

Our next meeting on Tuesday 20 May at 7.30 pm in the Harry Margary Hall will be our AGM. We will let members know what the talk will be as soon as we can.

Diary – St Peter and St Paul



May
2025



Thursday 1st	18.00-19.00 19.00	Bell Ringing Practice – <i>and each following Thursday</i> Choir Practice – <i>and each following Thursday</i>
Friday 2nd	N.B, 09.00	Carol Eastell's day off – and each following Friday Prayer Group in the Church – <i>and each following Friday</i>
Sunday 4th <i>Easter 3</i>	08.00 09.45 09.40 10.00	Holy Communion BCP Bubble Church in the Lads' Club Prayer Meeting in the Lady Chapel (<i>and each following Sunday</i>) Holy Communion
Monday 5th	14.00	N.B. NO Monday Chats in the Lads' Club (Bank Holiday)
Wednesday 7th	10 – 11.30 14.00	Toddler Group in the Lads' Club – <i>and each following Wednesday</i> Afternoon Prayer Group at 34 Harpswood Lane

Sunday 11th <i>Easter 4</i>	09.00 10.00 12.00	Holy Communion BCP at Pedlinge <i>Holy Communion</i> Baptism
Monday 12th	14.00	Monday Chats in the Lads' Club
Saturday 17th	10.30	Coffee Morning at Lympne Church
Sunday 18th <i>Easter 5</i>	08.00 10.00	Holy Communion BCP Holy Communion + Sunday Club in the Lads' Club
Monday 19th	14.00	Monday Chats in the Lads' Club
Wednesday 21st	14.00	Cinema Club in the Lads' Club
Saturday 24th	N.B.	Last date for items for the June magazine
Sunday 25th <i>Easter 6</i>	08.00 10.00	Holy Communion BCP Hooba Family Service

ST STEPHEN'S CHURCH, LYMPNE

Coffee Morning



SATURDAY 17th MAY

10.30 am - 12.30pm

- *Join us for coffee, cake & savoury bakes*
- *Take a break from that walk (Well-behaved dogs welcome)*
- *Catch up with old friends and new*

Proceeds to maintenance of the church plus a donation to this month's nominated charity:

***HOME FARM TRUST
LYMPNE PLACE***



A Date for your Diary

**Saturday 28th June 2025 at 7:30pm,
Kent Police Male Voice Choir -
Saltwood Church**

response "Are you a doctor?" "No" "Then why should I bother telling you?"

Another anecdote was Tommy Cooper in a Moroccan market, when he decided to buy a fez. The man gave it to him, saying "Jus like that". When Tommy asked why he had said that, the man said every English person says it when they buy one. He had never heard of or seen Tommy Cooper!

Norman Wisdom stood in the line-up at a Royal Variety Performance when the Duke of Edinburgh walked in and headed straight for his favourite comedian. They chatted until a fanfare sounded. "What's that?" said Norman. "The Queen," said the Duke. "Doesn't she play well" said Norman.

A very entertaining afternoon!

Lympne Fellowship normally meets at 1.15pm in the Harry Margary Hall on the 2nd Thursday of the month, with a programme of interesting and informative talks and activities. For further information about our group, please contact **Jill Page on 07846 819693**.



Astronauts sink into insignificance beside this ascension!

- Vance Havner



From The Parish Records

We welcome into the family of the church:

Jacob Sudborough, whose baptism was on 6th April

Our love and sympathy go to the family and friends of:

Ena Kempson, whose funeral was on 7th April.

PRAYER MINISTRY on Sundays at Saltwood

Every Sunday, at the end of the morning service at Saltwood, there is an opportunity for anyone to receive prayer, with two members of our Prayer Ministry Team. If you are concerned for someone in your family, a friend or a worrying situation, we would be honoured to pray with you. You will not be asked any invasive questions, and your request is always treated in complete confidence. We trust you will find these prayers bring you the Lord's blessings - as many people have already experienced. We look forward to welcoming you in prayer.



INTERCESSIONS FOR MAY



Today we pray especially for.....

- 1 Those who live in Turnpike Hill, Britten Close and Spanton Crescent
- 2 The work of Brighter Future International
- 3 St Mary the Virgin Elham
- 4 Those who minister in our residential homes
- 5 Those who maintain our community
- 6 Those who live in Rectory Lane and Victoria Place
- 7 Sunday Club
- 8 The work of Centrepoint
- 9 Our local GPs
- 10 All who minister at Canterbury Cathedral
- 11 Those who live in Old London Road, Redbrooks Way, Summer Close and Sunny Bank
- 12 Those unable to attend church, thinking particularly of those known to you
- 13 The homeless, thinking particularly of those known to you
- 14 Brockhill Park Performing Arts College – staff and pupils
- 15 St Martin's Cheriton, All Soul's Cheriton and St Nicholas Newington
- 16 Those who live in Grange Road and School Road
- 17 Church Army
- 18 Those who seek Christ
- 19 Residential and nursing homes – their staff and residents
- 20 Sidesmen and welcomers
- 21 Those who live in Castle Avenue, Lookers Lane and Quarry Road
- 22 Those who represent us – in parish, district and county councils and in Parliament
- 23 Those who help lead our worship
- 24 Those parts of the world suffering from natural disasters and all those seeking to relieve the suffering these cause
- 25 St Leonard's Hythe, St Michael's Anglican and Methodist Centre and Holy Cross Palmarsh
- 26 Those who live in Brockhill Road and Seaton Avenue
- 27 The armed forces and their families

ST. STEPHEN'S CHURCH, LYMPNE SERVICES AND EVENTS IN MAY



Sunday 4th	Holy Communion	11.00
Sunday 11th	Hooba Family Service	11.00
Saturday 17th	Coffee morning	10.30 – 12.30
Sunday 18th	Holy Communion	11.00
Sunday 25th	Holy Communion	11.00

Looking Ahead:

Tuesday 3rd May 7pm -Hymn Singing Practise
Thursday 5th May 7pm - Hope at the County Members

Weekly Events in church:

Mondays 12:-30-1pm (every other week) - Prayer Meeting
Mondays 19:30-21:30 - Bell ringing Practice
Saturday mornings 10:30 - 12:30 Eco group working churchyard (when dry)

Lympne Fellowship

We were delighted to welcome Christopher Hare with his talk “40 Years Without A Proper Job” (Working in Entertainment). As Stage Manager within a number of theatres, Chris met a wide variety of people from the world of entertainment. His main focus was on comedians, including Spike Milligan, Tommy Cooper and Norman Wisdom to name but a very few. He told us that Spike Milligan had the answer to those cold callers who often start with “How are you (or we) today?” His

Below is a photo from the day - but for a larger selection there is an online slideshow viewable at <https://tinyurl.com/lympne-easterplay>



Gold Eco Church Award

St Stephen's Church in Lympne has won a Gold Eco Church Award. And was the first church in the Diocese of Canterbury to gain the Gold Level.

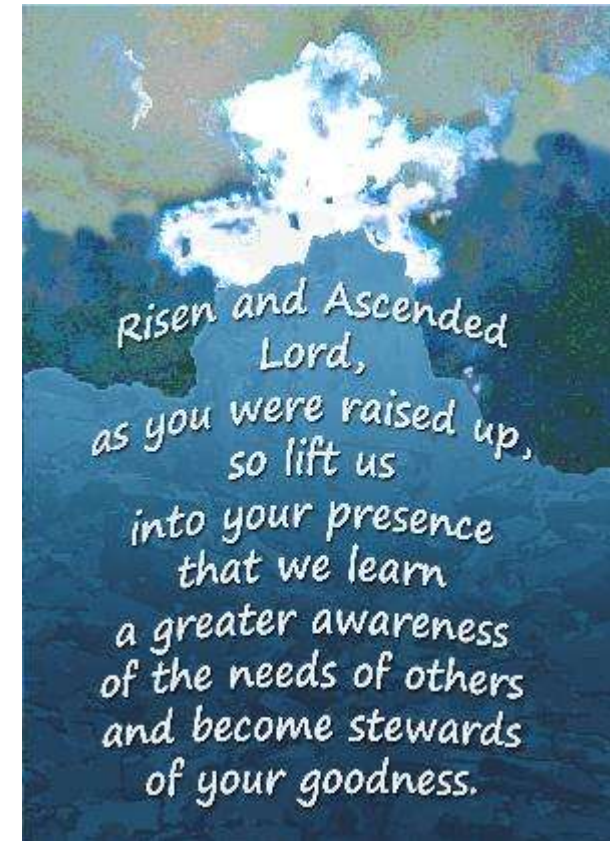
Eco Church is a national scheme to encourage a greater emphasis on caring for the environment within the church - and it impacts worship, the church building, the churchyard, the local community, global community and lifestyle.

St Stephen's Church was also the first church (in 2015) to install a ground source heat pump. The Eco Church scheme has encouraged the PCC to re-ignite the local interest in caring for the environment.

The Eco-Church project at Lympne Church has been very successful at encouraging many volunteers from the congregation to be involved, and also involved many from the local community. It has made the church much more visible in the local community and very significantly increased the numbers of people visiting the church and churchyard.

- 28 The Folkestone Rainbow Centre
- 29 Those coping with debt and unemployment, thinking particularly of those known to you
- 30 Our area Dean
- 31 Those who live in Blue House Lane, Sandy Lane and the A20, Saltwood

A Prayer for May



This prayer refers to Christ's Ascension: this year Ascension Day falls on 29th May. For more information, please see the article on the following page.

29th May - Ascension Day: 40 Days with the Risen Christ

40 days after Easter comes Ascension Day. These are the 40 days during which the Risen Christ appeared again and again to His disciples, following His death and resurrection. (*Matthew 28; Mark 16; Luke 24; and John 20.*)

The Gospels give us little of Christ's teachings and deeds during those 40 days. Jesus was seen by numerous of His disciples: on the road to Emmaus, by the Sea of Galilee, in houses, etc. He strengthened and encouraged His disciples, and at last opened their eyes to all that the Scriptures had promised about the Messiah. Jesus also told them that as the Father had sent Him, He was now going to send them - to all corners of the earth, as His witnesses.

Surely the most tender, moving 'farewell' in history took place on Ascension Day. Luke records the story with great poignancy: "When Jesus had led them out to the vicinity of Bethany, He lifted up His hands - and blessed them."

As Christmas began the story of Jesus' life on earth, so Ascension Day completes it, with His return to His Father in heaven. Jesus' last act on earth was to bless His disciples. He and they had a bond as close as could be: they had just lived through three tumultuous years of public ministry and miracles – persecution and death – and resurrection! Just as we part from our nearest and dearest by still looking at them with love and memories in our eyes, so exactly did Jesus: 'While He was blessing them, He left them and was taken up into heaven.' (Luke 24:50-1) He was not forsaking them, but merely going on ahead to a kingdom which would also be theirs one day: 'I am ascending to my Father and to your Father, to my God and your God...' (John 20:17)

The disciples were surely the most favoured folk in history. Imagine being one of the last few people on earth to be face to face with Jesus, and have Him look on you with love. No wonder then that Luke goes

During Lent those from Lympe and Saltwood who took part in the Hope Bible discussions at the County Members have decided to carry these on - meeting **monthly** on the first Thursday of the month at 7pm for an hours discussion. Food is available on Thursday evenings and many plan to arrive from 5:30pm for something to eat first. The first one is on Thursday 5th June.

With the warmer weather, work on the churchyard as part of the Eco church project carries on; we were delighted to be awarded a Gold Award - see article on this.

Another task in May is to dismantle the remaining scenery (columns, crosses and a tomb) from the Passion Play - see article with photos from this. The flexibility of Lympe church was put to good use for this. We are now planning our next event which is a Creative Arts Day on Saturday 12th July - for all adults, not just artists. This will involve many different activities around the church. More information will be available later, but save the date.

On Tuesday June 3rd at 7pm we are planning a Hymn singing practise - open to anyone who likes singing hymns and would like to learn some new ones will then be included in the services.

Lympe Passion Play

On Good Friday Afternoon most of the congregation at Lympe took part in the Passion Play - a faithful acting out of the events from Jesus praying in the Garden of Gethsemane to his trial by Caiaphas and then by Pilate, before his Crucifixion, Burial and Resurrection.

In the weeks beforehand people with different skills came together to transform Lympe church into five different scenes, sort costumes for disciples, priests and soldiers. A script was written, actors cast and lines learned. When rehearsing we knew this was going to have a big impact - you cannot act through the story of Easter without being very moved.

- Let Beth Lewsey have a paragraph for the appropriate months in the magazine, say February, March and April
- Chat through with the Home Group Leaders and Sue to see if they feel they can put on a lunch for one of the Saturdays
- Get lists out in church asking for soup makers
- Check and check through with the main helpers to see what will be needed. Lists are already on hand
- Shop for the cheese, butter and bread etc
- Be available for each Saturday
- Count the cash ready for our Treasurer to collect
- After the Lunches let Beth have a follow-up note for the magazine
- Thank the main helpers for all they have done for us.

Have a think about it or come and have a chat with me to see if it is something you would like to be involved with.

Monday Chats:

Are being a bit disrupted at this time of year with several Bank Holidays. So, we are not meeting on May 5th, nor 26th. Otherwise we are here every Monday from 2pm till 4 and ready to welcome you with lots of chat, cups of tea and homemade cake.

The Afternoon Prayer Group:

... have a meeting on Wednesday 7 May at 2pm at the home of Penny Forsyth, 34 Harpswood Lane. We would love to welcome more people to prayer as there are such tremendous needs these days.

From Rachel Cornish and Chris Laker (Wardens at Lympne):

The theme of Lent was Hope and the season of Easter is one of Hope and looking forwards.

on: 'they worshipped Him - and returned to Jerusalem with great joy. And they stayed continually at the temple, praising God.' (Luke 24:52,53)

No wonder they praised God! They knew they would see Jesus again one day! 'I am going to prepare a place for you... I will come back and take you to be with me that you also may be where I am.' (John 14:2,3) In the meantime, Jesus had work for them to do: to take the Gospel to every nation on earth.

From the Parish Magazine –MAY 2005

What a lot was going on in Saltwood in May, twenty years ago!

A special Ascension Day service of Holy Communion on the evening of 5th May

Guy Sharrock was appealing for 'people willing to join me on occasional forays to tackle Saltwood's litter hotspots'

John Lewis was 'calling all friends of the Lads' Club ... to help with the Spring Clean.'

Saltwood House was holding an 'Unusual and Specialist Plant Sale' on Tuesday 17th May in aid of Pilgrims Hospices, and Church funds.

On Friday 20th May Jo Rice gave a talk to the Saltwood Village Society entitled 'Living and Working in Japan' (*Editor's note: I remember attending even though I didn't live in Saltwood at the time!*)

Willow Wood held an Open Garden event on Sunday 22nd, in aid of Saltwood Church and Folkestone Rainbow Centre.

But surely the highlight of the month must have been at the church, from 28th to 30th May: 'Melody of Flowers', a celebration including worship, flower displays, cake and plant stalls, an art exhibition, an organ recital by Reverend John Wright, a jazz evening, a performance by Roly the Clown 'hilarious and amazing fun for children and adults alike', and a service of Evensong, followed by an evening concert. 'including the music titles giving the inspiration for the floral arrangements.'

5



Saltwood Cinema Club

on Wednesday 21st May
at 2pm in the Lads' Club

THE NOTEBOOK

An elderly man reads to a woman with dementia the story of two young lovers whose romance is threatened by the difference in their respective social classes. But nobody knows what tomorrow holds and are all summer loves doomed to fail? Starring Ryan Gosling and Rachel McAdams.

Cost £5 per person to include tea and cake

All proceeds to the Lads' Club Funds

Some Musings...

... *Contributed by the swimming friend of one of our readers:*

If you find you are going in the wrong direction, remember God allows U turns.

... *From the Editor:* There was so much good stuff to contemplate in the 'Living Hope' Lent booklet, but one of the sections that particularly resonated with me was the reminder that our memories tend to be poor (that's why I love a list) but God never forgets! The sentence that has stayed with me: 'We can be living in answers to prayers that we've forgotten we even prayed'



Do you have any musings – even a one-line thought – that you could share? Do pass them to the editor

WARDENS' CORNER

From John Campbell: -

After Service Refreshments

I would just like to give you all a little nudge and ask you each to remember when you get your tea or coffee after the service on Sunday that you would move away from the serving table. By stacking the chairs there's ample room for all of us. But if we congregate around the table, which we tend to do unthinkingly, it really does create traffic jam and problems for people carrying cups and saucers and makes it much more likely that somebody is going to drop theirs or spill it, or scald someone.

From Carol Eastell: -

Lent Lunches

We had four weeks of Lent Lunches and are pleased to write that **£1397** was made for our missions. So very many thank yous to everyone who helped: from the folk putting up the tables and getting them set up for lunch to those clearing away. And huge thank yous to Sue Beggs, Melissa and their teams, as well as my group, for pulling their weeks together and making it all so very enjoyable. As always, we had great input from our Scouts, who have been a great help. We felt it was a good team event and at the same time helping our needy missions.

As yet, no one has come forward to take on the overall responsibility for future Lent lunches. I have made a list of the sort of things that person would need to think about and do:

- Get the date of the following year in the diary, and book the Lads' Club out for those Saturdays with Jan Heard.
- Nearer the time get some posters out round the village